



QR-25[®] Series Model 210

Parts Manual
Record of Change 106

This manual contains important safety information and must be carefully read in its entirety and understood prior to installation by all personnel who install, operate and/or maintain this product.

On-line product registration, parts ordering and warranty information is available at www.quincycompressor.com

Manual No. 2022203600

July 2014 Edition

INTRODUCTION

This manual provides information for the following QR-25 Series, Model 210 (Record of Change 106) compressor versions:

- L Control Version L**
head assembly with 2 unloader towers & a hydraulic unloader
- LS Control Version LS**
head assembly with 2 unloader towers, a hydraulic unloader, & a pilot valve with a check valve assembly
- LVD Control Version LVD**
head assembly with 2 unloader towers, a hydraulic unloader, & a pilot valve with a lockout & check valve

These compressors are aircooled, single stage, two cylinder, pressure lubricated compressors, with up to 100 PSI continuous pressure capability (*101 to 150 PSI intermittent pressure capability with proper configuration; consult factory*). The Model 210 has a 2.5" bore x 2" stroke and can be run at 400-1000 RPM.

Available options included in this manual:

- hooded air filter
- hooded air filter / silencer

CHANGES

since previous printing (dated January 2014):

Bearing carrier group was redesigned with a new oil pump including an oil filter.

TABLE OF CONTENTS

Serial Number Identification	2
Ordering Replacement Parts	2
Quin-Cip Lubricant	2
Crankcase Lubricant Capacity	2
Crankshaft Group	3
Crankcase Group	4
Bearing Carrier Group	5
Connecting Rod & Piston Group	6-7
Cylinder & Head Groups	8-9
Head Assemblies	10-11
Control Groups	
Version L	12
Version LS	13
Version LVD	14
Pilot Valves	15
Differential Setting Charts	15
Suction Valve Unloader Assemblies	16
Decals	16
Gasket Sets, Repair Kits &	
Recommended Spare Parts	17
Typical Unit Repair Parts List	18

MODEL & SERIAL NUMBER IDENTIFICATION

Record of Change No.

MODEL		
SERIAL NO.		

110831



Model & Serial Number Identification Tag

The model & unit serial number identification tag is located on the air tank top plate.

Serial Number

The basic compressor serial number decal is located on the bearing carrier of the basic compressor (opposite the flywheel side). *Fill in the numbers from your compressor unit and basic compressor in the corresponding spaces provided here, and reference this page when ordering replacement parts.*

All replacement parts are to be ordered through an authorized Quincy distributor. Insist on genuine Quincy parts only! Failure to do so may void warranty.

ORDERING REPLACEMENT PARTS

Prompt service can be rendered on repair parts orders if the following information is given:

- Item 1)** the model number, record of change number, & serial number.
- Item 2)** the exact part number needed. (Do not order by item numbers.)
- Item 3)** the exact quantity needed.
- Item 4)** the preferred type of transportation.

QUIN-CIP LUBRICANT

Refer to the chart below to order Quin-Cip-D or Quin-Cip compressor lubricant from your local authorized Quincy distributor.

Quin-Cip-D Lubricant (synthetic)	
SAE 30 (ISO 100)	
Quart	115468Q
Case (12 Qts.)	115438C
Quin-Cip Lubricant	
SAE 10W (ISO 32)	
Quart	112541Q032
Case (12 Qts.)	112541C032
SAE 20 (ISO 68)	
Quart	112542Q068
Case (12 Qts.)	112542C068
SAE 30 (ISO 100)	
Quart	112543Q100
Case (12 Qts.)	112543C100

CRANKCASE LUBRICANT CAPACITY

Model	Capacity
QR 210	26 Oz. (769 ml.)

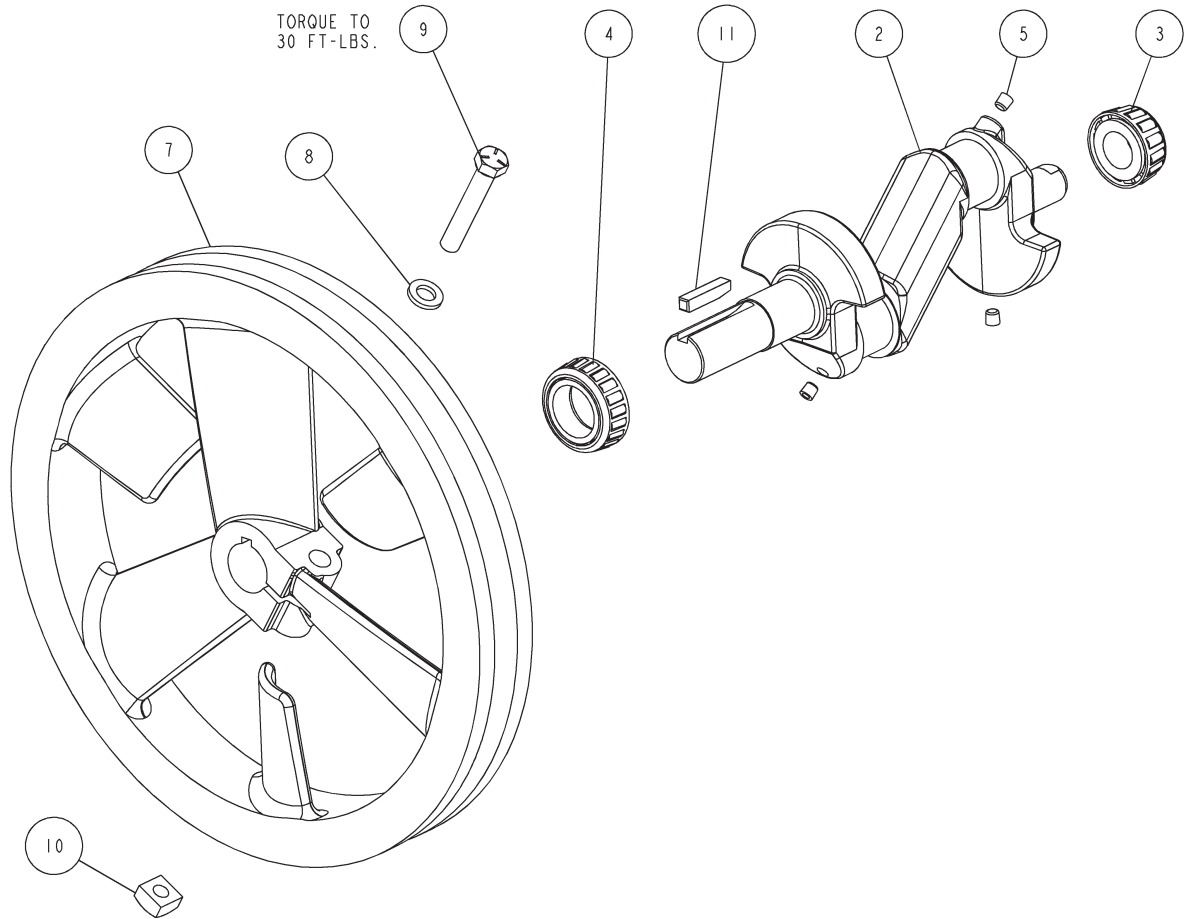
CAUTION !
Refer to the Quincy QR-25 Series instruction manual for vital lubrication information.

CAUTION !
Follow all safety precautions outlined in the Quincy QR-25 Series instruction manual.

WARNING !
Do not operate this compressor without a totally enclosed belt guard or any other required safety equipment.

DANGER !
Air used for breathing or food processing must meet OSHA 1910.134 or FDA 21 CFR 178.3570 regulations. Failure to do so may cause severe injury or death.

CRANKSHAFT GROUP 111032-007



ITEM	PART NUMBER	QTY	DESCRIPTION
1	110777X	1	CRANKSHAFT ASSEMBLY
2	110777	1	CRANKSHAFT (N.S.S.-ORDER 110777X)
3	6552	1	BEARING, CONE
4	6554	1	BEARING, CONE
5	6565	3	HOLE PLUG
6	6506X	1	SHEAVE ASSEMBLY
7	6506R	1	SHEAVE, COMPRESSOR (N.S.S.-ORDER 6506X)
8	1836	1	FLAT WASHER
9	123478-L18	1	HEX SCREW, 3/8-16 UNC X 2.25, GRADE 5
10	124372-L02	1	NUT
11	6575	1	KEY

N. S. S. = NOT SOLD SEPARATE

CRANKCASE GROUP 111019

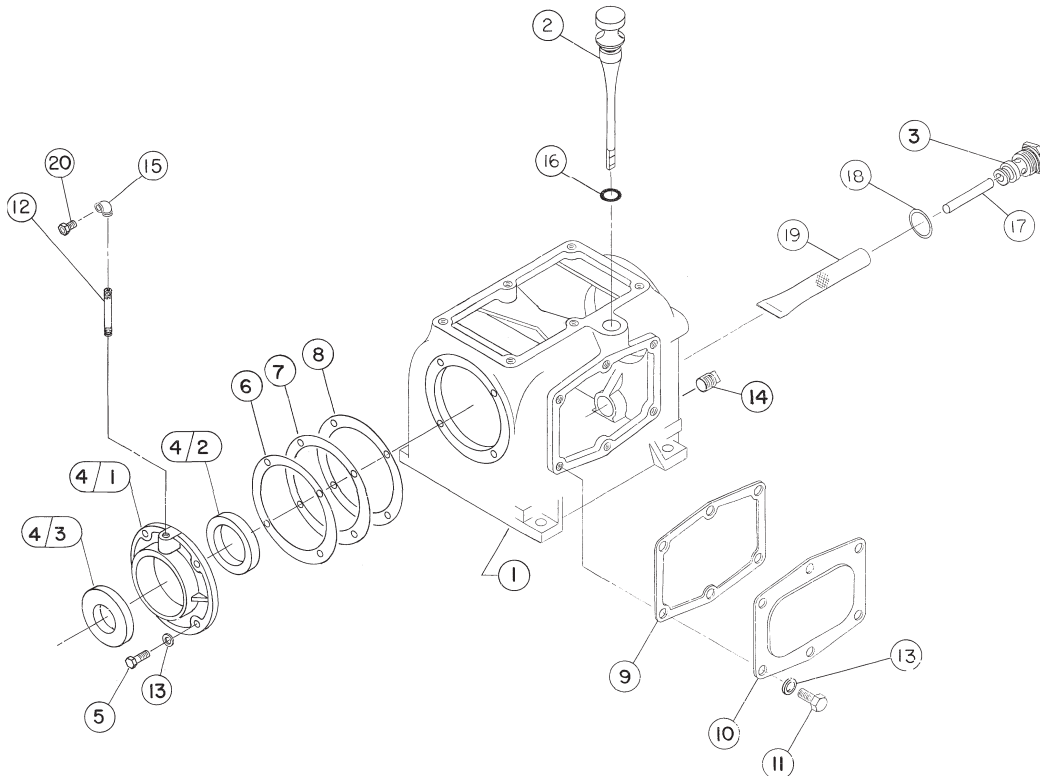
Item Number	Qty.	Part Number	Description
1	1	111012	crankcase
2	1	110070-4	oil gauge
3	1	6517	oil inlet screw
4	1	111011X	bearing carrier assembly includes:
4.1	1	111011	bearing carrier (.0015/.0025 crankshaft end play)
4.2	1	6553	bearing cup
4.3	1	111016	shaft seal
5	4	123478-K10	hex. screw, 5/16-18 unc x .75, grade 5 (@ 12 ft.-lbs.)
6	*	111015-007	bearing adjustment shim, .007 fiber
7	*	111015-010	bearing adjustment shim, .010 fiber
8	*	111015-015	bearing adjustment shim, .015 fiber
9	1	6558	gasket, handhole plate
10	1	6507	handhole plate
11	6	123478-K07	hex screw, 5/16-18 unc x .50, grade 5 (@ 10 ft.-lbs.)
12	1	125932-026	pipe nipple, 1/8 npt x 4.00
13	10	110428N031	flatwasher, 5/16
14	1	1301	pipe plug, 3/8 npt
15	1	8225	pipe elbow, 90°, 1/8 npt
16	1	123157-112	"o"ring, 3/32 wide x .69 o.d.
17	1	6576	oil tube
18	1	3100	gasket, oil sump
19	1	6518	screen
20	1	2024905400	breather vent, 1/8 npt

N.S.S. = Not Sold Separate

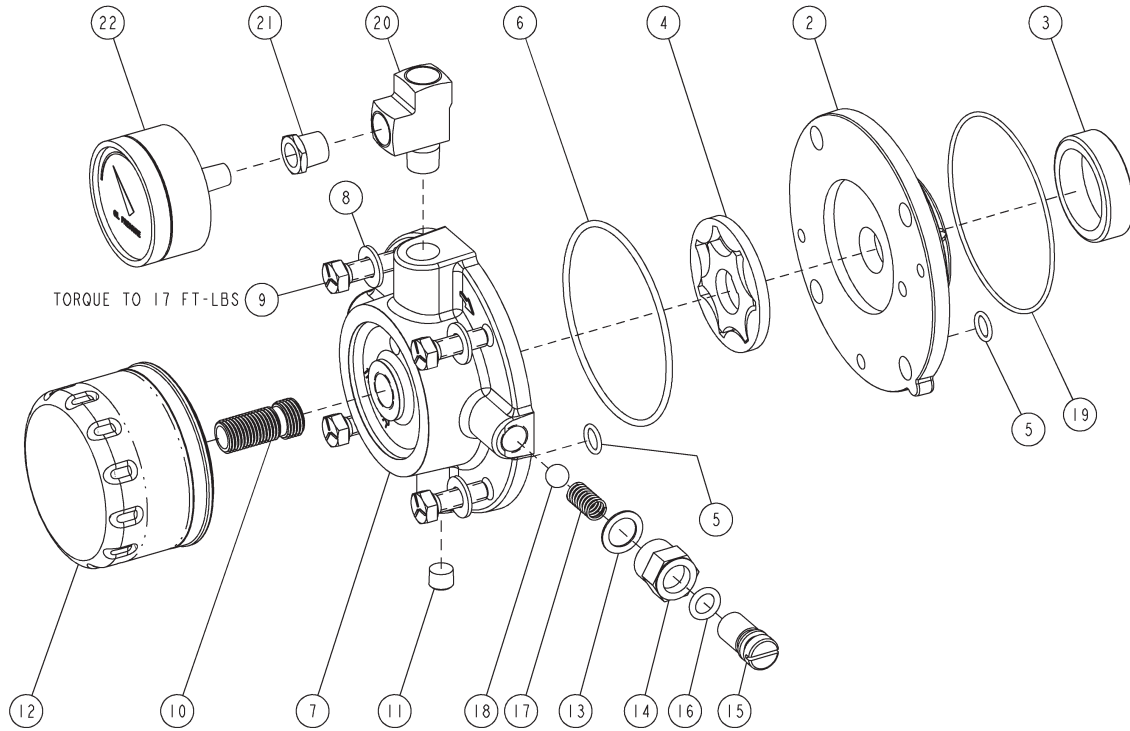
* Quantity as required

@ Indicates torque value (dry threads).

Note: Tighten all bolts & capscrews in any bolt pattern, evenly bringing each bolt to torque in equal increments, while moving about the bolt pattern. This is particularly important for connecting rod & head bolts.



BEARING CARRIER GROUP 2021031403



2021031403 BEARING CARRIER GROUP			
ITEM	PART NUMBER	QTY	DESCRIPTION
1	111013X	1	BEARING CARRIER ASSEMBLY
2	111013	1	BEARING CARRIER
3	6551	1	BEARING CUP
4	110766	1	OIL PUMP GEROTOR
5	22749-012	2	O-RING, VITON
6	22749-152	1	O-RING, VITON
7	116366	1	COVER PLATE
8	110428N031	4	FLAT WASHER, 5/16
9	142578-K12	4	CAP SCREW, 5/16-18x1.00, GRADE 5
**	10	1	FILTER ADAPTER STUD
*	11	1	PIPE PLUG, 1/8 NPT
	12	1	OIL FILTER
	13	1	WASHER
	14	1	NUT, ADJUSTMENT SCREW
	15	1	ADJUSTMENT SCREW
	16	1	O-RING, VITON
	17	1	SPRING
	18	1	BALL, OIL PUMP
	19	1	O-RING, VITON
*	20	1	BRASS PIPE TEE, 1/4X1/4X 1/4
*	21	1	PIPE BUSHING, 1/4 X 1/8
*	22	1	OIL PRESSURE GAUGE
MAINTENANCE PARTS			
	2023400101		10 PACK OF OIL FILTERS
REPLACEMENT KITS			
	2021031484		BEARING CARRIER ASSEMBLY REPLACEMENT KIT INCLUDES ITEMS 1 THROUGH 21

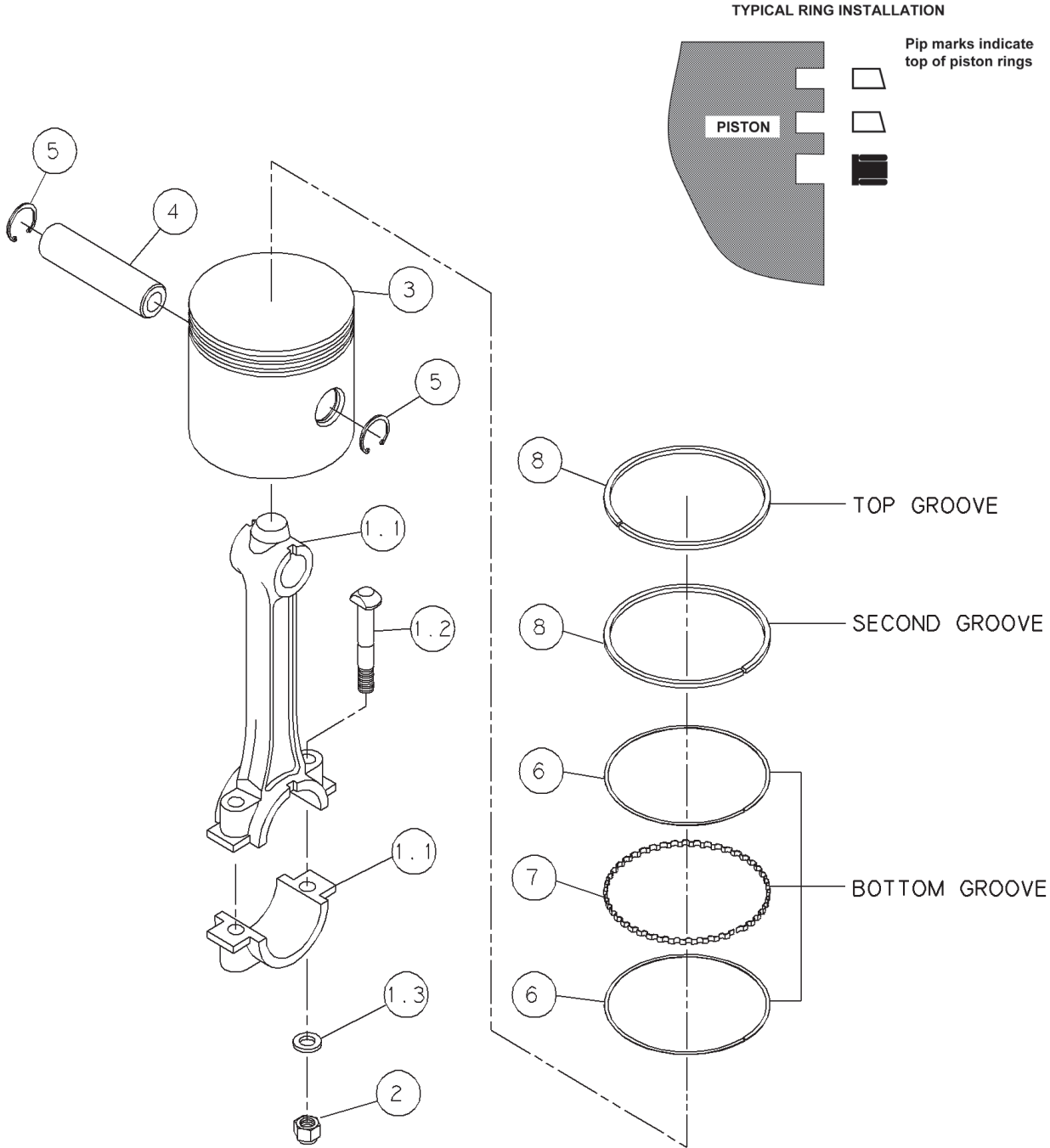
* INSTALL WITH PIPE SEALANT

** INSTALL WITH RETAINING COMPOUND

N.S.S. = NOT SOLD SEPARATE

TORQUE VALUES ARE FOR DRY THREADS. TIGHTEN MULTIPLE BOLTS, CAPSCREWS, AND HEX NUTS IN A CRISS-CROSS PATTERN. BRING EACH FASTENER TO THE RECOMMENDED TORQUE SPECIFICATION IN EVEN INCREMENTS.

CONNECTING ROD & PISTON GROUP 110733



CONNECTING ROD & PISTON GROUP 110733

Item Number	Qty.	Part Number	Description
1	1	110563X	connecting rod assembly (N.S.S.; order 110563X1)
1.1	1	110563R	connecting rod (N.S.S; order110563X1)
1.2	2	110562	connecting rod bolt
1.3	2	111260-002	connecting rod washer
2	2	124471-K08	locknut, 5/16-24 unf (@ 17 ft.-lbs.)
3	1	6534-001	piston
4	1	110190-003	piston pin
5	2	110270	retaining ring
6	2	111281	oil ring rail
7	1	111280	oil ring expander
8	2	1652	piston ring
Maintenance Parts			
	1	6534-011	replacement piston (.010 oversize)
	1	6534-021	replacement piston (.020 oversize)
	2	6801	ring set (standard)
	2	110392-010	ring set (.010 oversize)
	2	110392-020	ring set (.020 oversize)
		6534X001	Replacement Piston Assembly (Standard) includes piston pin, retaining rings, standard ring set & piston
		6534X011	Replacement Piston Assembly (.010 Oversize) includes piston pin, retaining rings, oversize ring set & piston
		6534X021	Replacement Piston Assembly (.020 Oversize) includes piston pin, retaining rings, oversize ring set & piston

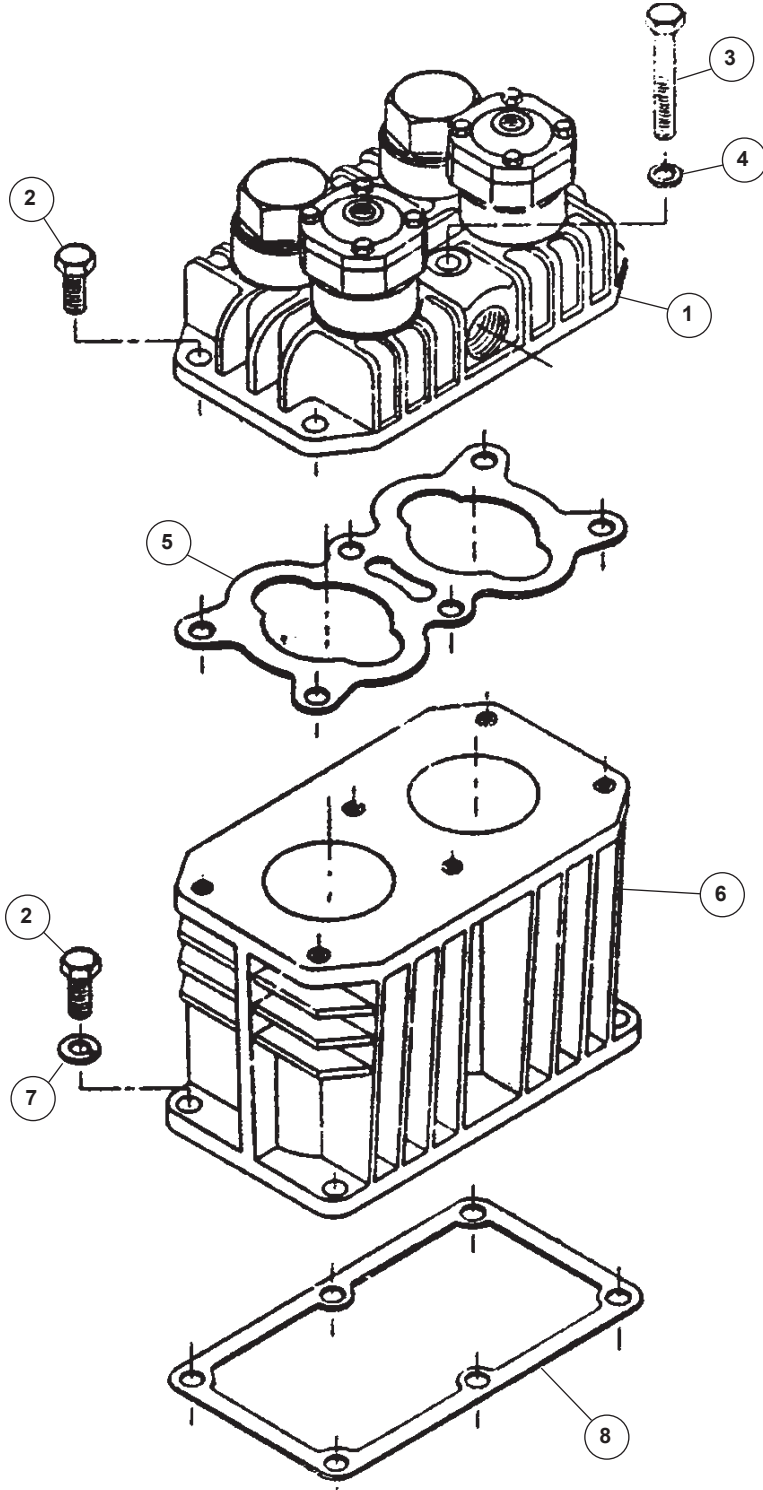
N.S.S. = Not Sold Separate

@ Indicates torque value (dry threads).

Note: Tighten all bolts & capscrews in any bolt pattern, evenly bringing each bolt to torque in equal increments, while moving about the bolt pattern. This is particularly important for connecting rod & head bolts.

CYLINDER & HEAD GROUP 110732-001

(control versions L, LS & LVD)



CYLINDER & HEAD GROUP 110732-001

(control versions L, LS & LVD)

Item Number	Qty.	Part Number	Description
1	1	6539UU	head assembly (see page 15 for parts breakdown)
2	10	123478-K10	hex. screw, 5/16-18 unc x .75, grade 5 (@ 17 ft.-lbs.)
3	2	123478-K17	hex. screw, 5/16-18 unc x 2.00, grade 5 (@ 17 ft.-lbs.)
4	2	2159	flatwasher, 5/16
5	1	6561	gasket, cylinder to head
6	1	6533	cylinder
7	6	123115-05C	lockwasher, 5/16
8	1	6557	gasket, cylinder to crankcase

Maintenance Parts

8755

Replacement Head Assembly

includes head assembly, copper tube, tube fittings & cylinder to head gasket

N.S.S. = Not Sold Separate

@ Indicates torque value (dry threads).

Note: Tighten all bolts & capscrews in any bolt pattern, evenly bringing each bolt to torque in equal increments, while moving about the bolt pattern. This is particularly important for connecting rod & head bolts.

AIR FILTER

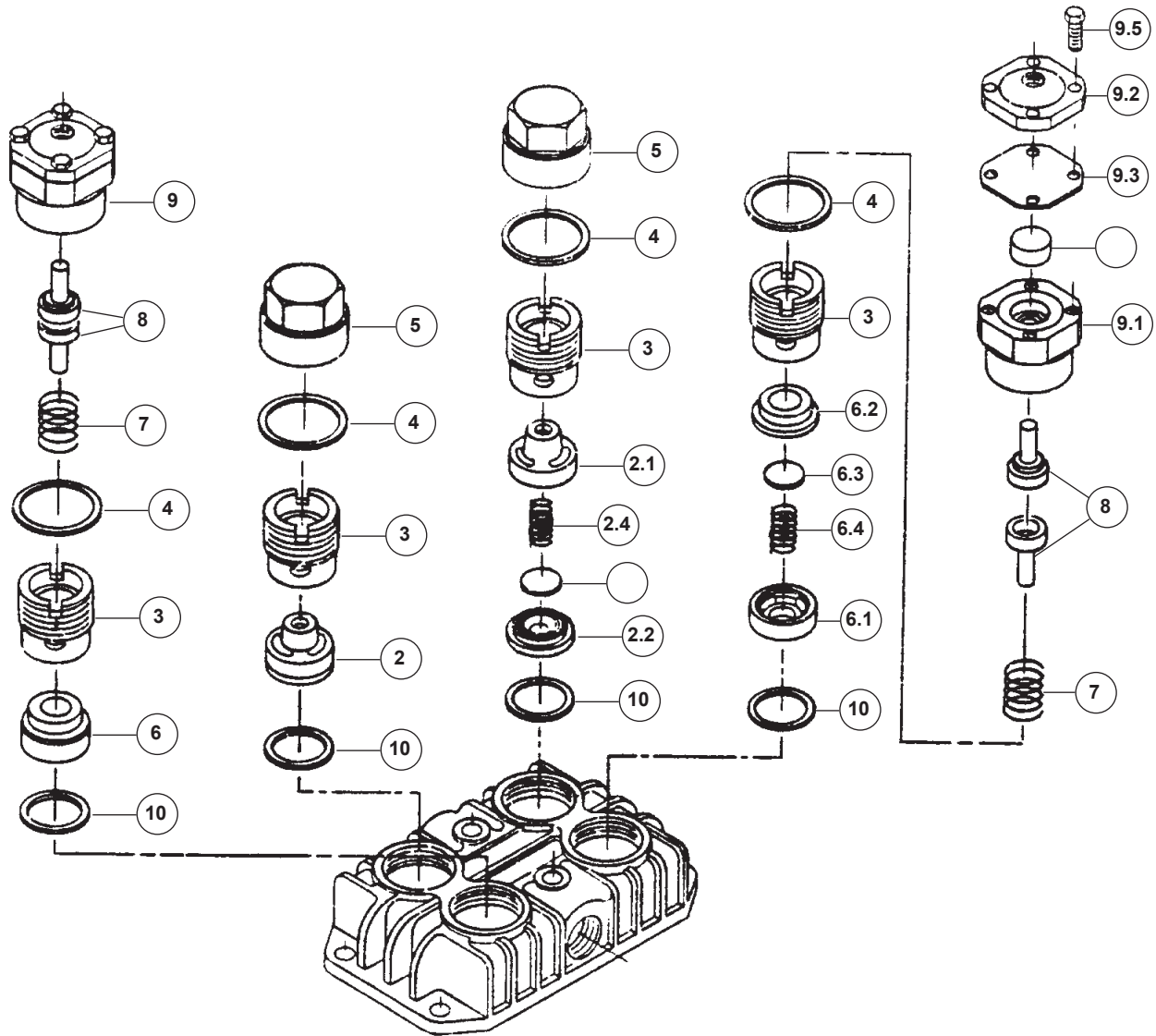


112835-004
Air Filter

112845-06
Air Filter Element

HEAD ASSEMBLY 6539UU

(control versions L, LS & LVD)



HEAD ASSEMBLY 6539UU

(control versions L, LS & LVD)

Item Number	Qty.	Part Number	Description
1	1	6539	head
2	2	6543X1	discharge valve assembly
2.1	1	6543	discharge valve bumper
2.2	1	6544	discharge valve seat
2.3	1	1194	valve disc
2.4	1	8123	discharge valve spring
3	4	6548	hold down screw (@ 85 ft.-lbs.)
4	4	6562	gasket, valve cover
5	2	6546	valve cover cap
6	2	6540X1	suction valve assembly
6.1	1	6540	suction valve bumper
6.2	1	6541	suction valve seat
6.3	1	1194	valve disc
6.4	1	6542	valve spring
7	2	6550	valve spring
8	4	110614-1	unloader plunger
9	2	40328	unloader assembly (N.S.S.; order 8201)
9.1	1	7852	unloader body
9.2	1	7853	unloader cap
9.3	1	8200	unloader diaphragm
9.4	1	7855	unloader button
9.5	4	8088	screw
10	4	2134	valve gasket

Maintenance Parts

8133	Replacement Discharge Valve Assembly includes discharge valve assembly
6540X	Replacement Suction Valve Assembly includes suction valve assembly & valve gasket
8201	Replacement Unloader Assembly includes air plungers, unloader assembly, valve spring & valve cover gasket

N.S.S. = Not Sold Separate

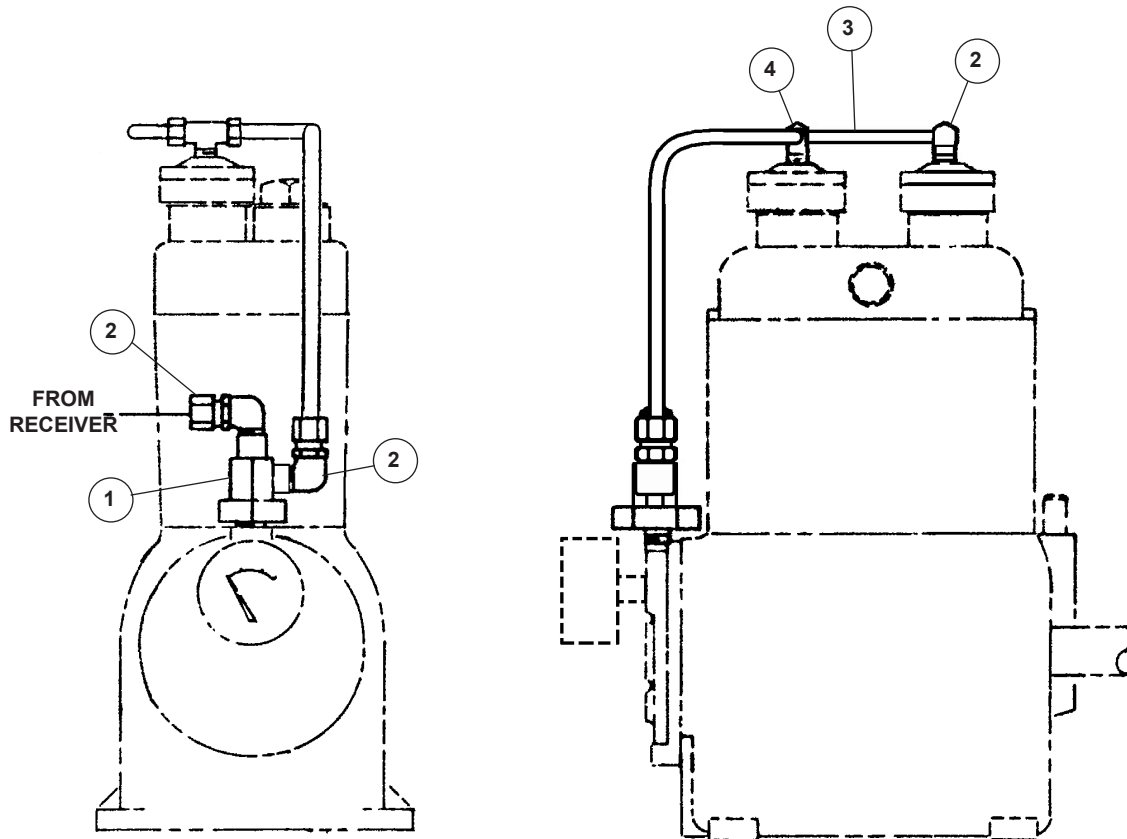
@ Indicates torque value (dry threads).

Note: Tighten all bolts & capscrews in any bolt pattern, evenly bringing each bolt to torque in equal increments, while moving about the bolt pattern. This is particularly important for connecting rod & head bolts.

CONTROL GROUP 110872

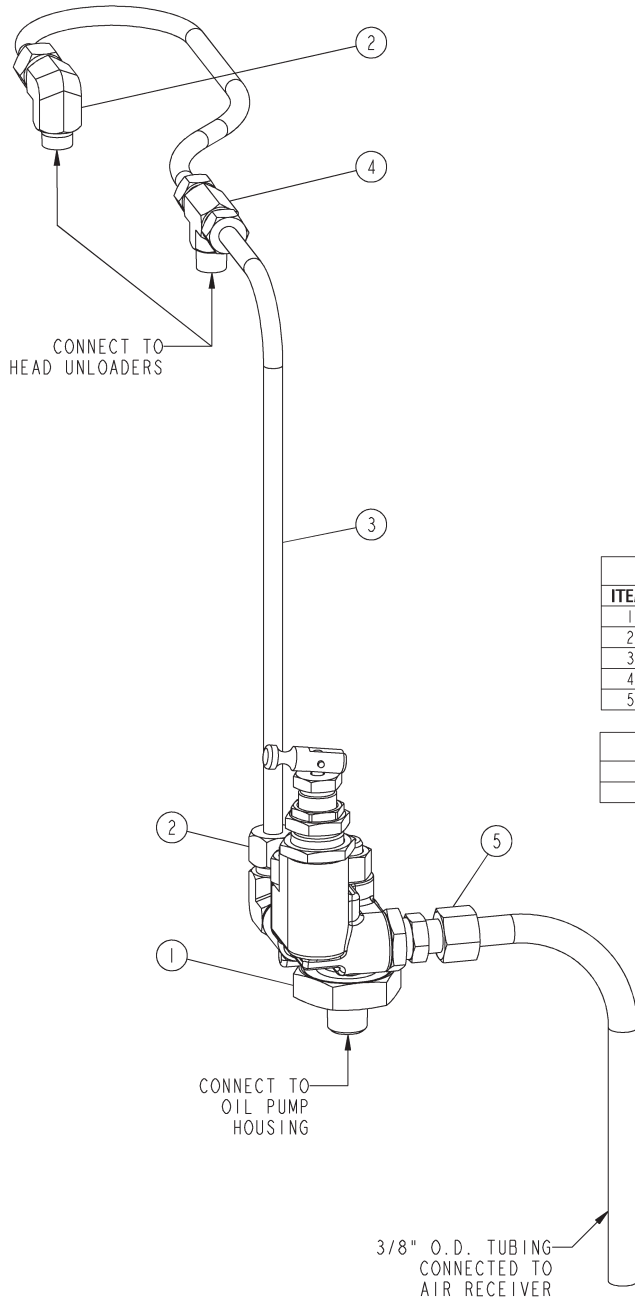
(control version L)

Item Number	Qty.	Part Number	Description
1	1	110827-001	hydraulic unloader assembly
2	3	1642	tube fitting, 90° male elbow, 1/4 tube x 1/8 npt
3	18 in.	110515-025	copper tube, 1/4 o.d.
4	1	1665	tube fitting, male branch tee, 1/4 tube x 1/4 tube x 1/4 npt
			Maintenance Parts
1	1	113225	Hydraulic Unloader Repair Kit includes diaphragm, stem assembly, filter assembly and springs



CONTROL GROUP 2023903354

(control version LS)



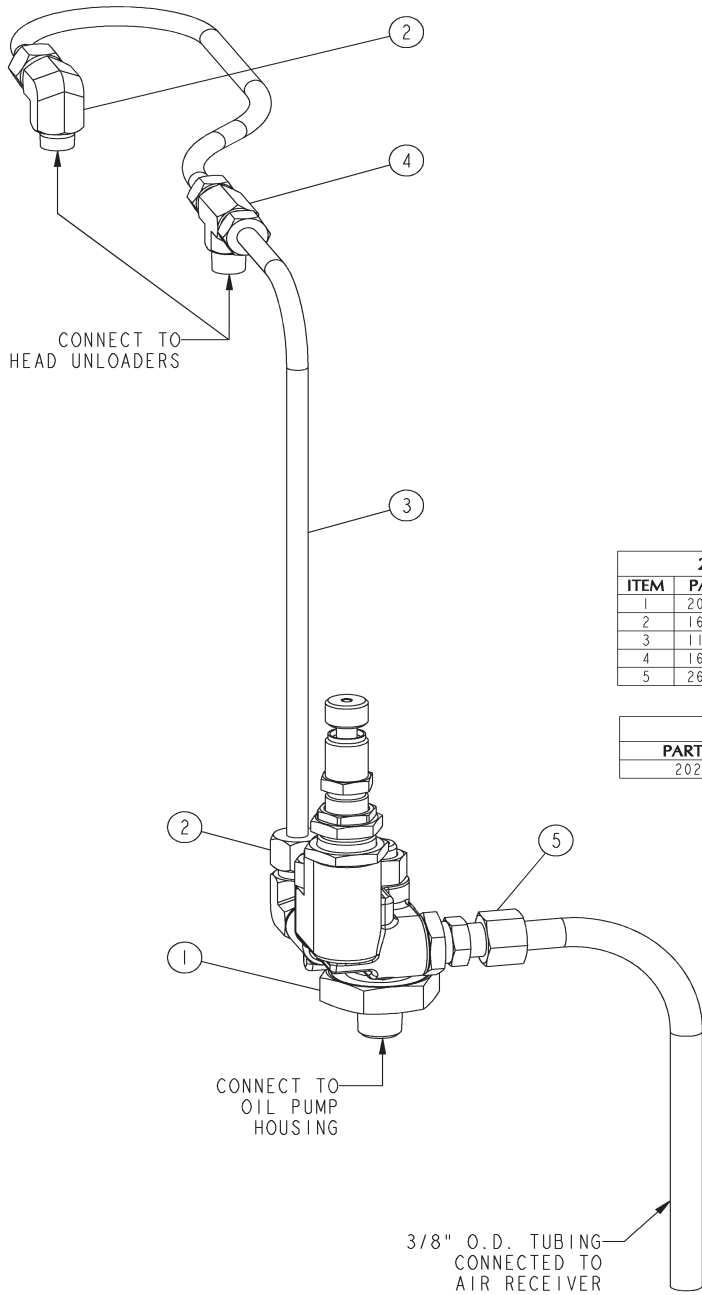
2023903354 LS CONTROL GROUP (STANDARD 90-100 PSI)			
ITEM	PART NUMBER	QTY	DESCRIPTION
1	2023903304	1	LS CONTROL VALVE, 90-100 PRESET
2	1642	2	TUBE FITTING, 90° ELBOW, 1/4T x 1/8MP
3	110515-025	1	1/4" COPPER TUBING - 5 FT.
4	1665	1	MALE BRANCH TEE 1/4T X 1/8P
5	2616	1	TUBE FITTING, STRAIGHT, 3/8 TUBE X 1/4 NPT

MAINTENANCE PARTS	
PART NUMBER	DESCRIPTION
2023903290	CONTROL VALVE INLET FILTER

* See page 15 for optional pilots that must be used with respective pressure ranges.

CONTROL GROUP 2023903254

(control version LVD)



2023903254 LVD CONTROL GROUP (STANDARD 85-95 PSI)			
ITEM	PART NUMBER	QTY	DESCRIPTION
1	2023903204	1	LVD CONTROL VALVE, 85-95 PRESET
2	1642	2	TUBE FITTING, 90° ELBOW, 1/4Tx1/8MP
3	110515-025	1	1/4" COPPER TUBING - 5 FT.
4	1665	1	MALE BRANCH TEE 1/4T X 1/8P
5	2616	1	TUBE FITTING, STRAIGHT, 3/8 TUBE X 1/4 NPT

MAINTENANCE PARTS	
PART NUMBER	DESCRIPTION
2023903290	CONTROL VALVE INLET FILTER

* See page 15 for optional pilots that must be used with respective pressure ranges.

PILOT VALVES

COMBINATION VALVES - CONTROL VERSION "LVD"							
CONTAINS THE HYDRAULIC UNLOADER, PILOT VALVE, AND CHECK VALVE IN A SINGLE PART							
	PILOT SETTINGS	QUINCY PART #	FACTORY PRE-SET:		*CUSTOMER RE-SETTABLE:		
	SEE WARNING BELOW		LOAD PRESSURE (PSI)	UNLOAD PRESSURE (PSI)	LOAD PRESSURE RANGE (PSI)	UNLOAD PRESSURE RANGE (PSI)	
	CUSTOM PRESSURE SETTING		2023903201	100	115	**	51-120
			2023903202	130	140	**	121-250
			2023903203	450	500	**	251-500
	STANDARD 1-STAGE COMPRESSOR		2023903204	85	95	**	51-120
STANDARD 2-STAGE COMPRESSOR		2023903205	155	165	**	121-250	

COMBINATION VALVES - CONTROL VERSION "LS"							
CONTAINS THE HYDRAULIC UNLOADER, PILOT VALVE, AND CHECK VALVE IN A SINGLE PART							
	PILOT SETTINGS	QUINCY PART #	FACTORY PRE-SET:		*CUSTOMER RE-SETTABLE:		
	SEE WARNING BELOW		LOAD PRESSURE (PSI)	UNLOAD PRESSURE (PSI)	LOAD PRESSURE RANGE (PSI)	UNLOAD PRESSURE RANGE (PSI)	
	CUSTOM PRESSURE SETTING		2023903301	100	110	**	51-120
			2023903302	130	140	**	121-250
			2023903303	450	500	**	251-500
	STANDARD 1-STAGE COMPRESSOR		2023903304	90	100	**	51-120
STANDARD 2-STAGE COMPRESSOR		2023903305	165	175	**	121-250	

* THE PILOT IS SUPPLIED PRESET FROM THE FACTORY. IF THE PILOT NEEDS TO BE RESET, REFER TO THE QR-25 SERIES INSTRUCTION MANUAL FOR INSTRUCTIONS.

** SEE DIFFERENTIAL SETTING CHART. LOAD PRESSURE = UNLOAD PRESSURE - DIFFERENTIAL.

DIFFERENTIAL SETTING CHART	
UNLOAD PRESSURE (PSI)	DIFFERENTIAL MIN-MAX (PSI)
51-175	10-15
175-250	15-25
251-500	25-50

WARNING!
 NOT ALL PILOTS ARE FOR USE WITH ALL COMPRESSOR SYSTEMS. MAKE SURE THAT THE PILOT YOU ORDER IS SET WITHIN THE SAFE OPERATING LIMITS OF YOUR COMPRESSOR. FAILURE TO HEED THIS WARNING COULD RESULT IN AN EXPLOSION.
 REFER TO THE "INTRODUCTION" SECTION OF YOUR PARTS MANUAL FOR THE SAFE OPERATING LIMITS OF YOUR COMPRESSOR.

SUCTION VALVE UNLOADER ASSEMBLIES

Description

The Quincy suction valve unloader assembly consists of unloading arrangements on the suction valves, having a plunger to contact the suction valve disc and an unloader pilot valve to automatically regulate the passing of receiver pressure to the unloading arrangement.

Application

Suction valve unloader assemblies are recommended for use on Quincy compressors where the compressor is to run continuously and a constant pressure is to be maintained. The purpose is to automatically unseat the suction valve of the compressor when the air supply is greater than the demand.

Operation

Unloading occurs when receiver pressure is sufficient to overcome pilot valve spring pressure. The check ball is then unseated, allowing receiver pressure to pass to the unloading arrangements. The compressor will run unloaded until the receiver pressure drops to a predetermined level. At this time, the action of the ball is reversed, shutting off receiver pressure to the unloader arrangement and venting the unloader to atmosphere. This allows the compressor to load. The drive, either electric motor or combustion engine, runs continuously and must be started and stopped manually.

The LS control version is equipped with a toggle lever on the pilot valve which can be flipped to provide manual unloading.

The LVD control version is designed to provide a choice between "start/stop" or "continuous run" operation. The LVD pilot valve can be set for "start/stop" operation by turning the knurled knob at the end of the pilot valve clockwise until it stops. Under these circumstances a pressure switch is required to stop the motor. Failure to use a pressure switch, with the pilot valve locked out, could result in unsafe conditions.

WARNING !

A pressure switch must be incorporated whenever an LVD pilot valve is employed as part of the control system.

The compressor will operate in the continuous run mode if the knurled knob on the LVD pilot valve is turned counterclockwise until it stops.

Installation

The pilot valve is to be connected to the air receiver using a minimum of 3/8" o.d. copper tube. Compressors in the field, not equipped with a suction valve unloader assembly, can be converted to constant speed. Consult your local Quincy distributor for assistance with conversion procedures.

Service

Periodically check the filter & screens in the inlet of the pilot valve to make sure they are free of obstructions. If they become clogged, remove and clean or replace. Inspect the "o"ring located in the opposite end of the pilot valve body for wear or damage; replace if necessary.

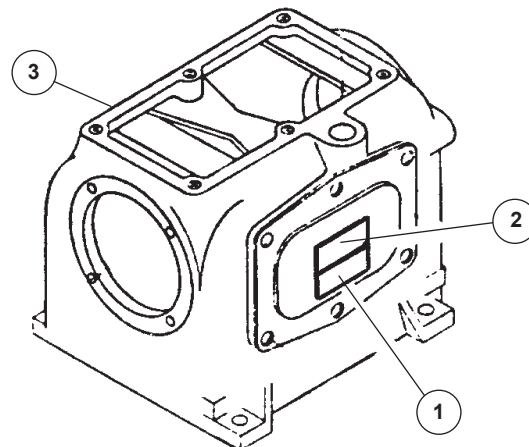
Adjustment

The unloading pressure is adjustable and is regulated by turning the hex nut (marked "unload adj." in cross sectional illustrations of pilot valves). Turn the hex nut clockwise to increase and counterclockwise to decrease the unloading pressure.

The differential (difference between unloading and loading pressure) is set by turning the hex nut marked "differential adjustment" in the illustrations of the pilot valves on previous pages. Increase the differential pressure by turning the hex nut clockwise - decrease by turning counterclockwise. Tighten the locknuts after adjustment.

Decals			
Item #	Qty.	Part Number	Description
1	1	124839	decal, WARNING!, "Do not remove staples..."
2	1	127889-B	decal, DANGER! "Air used for breathing..." (N.S.S.; order 127889)
3	1	127889-A	decal, CAUTION!/manual/"Failure to follow..." (N.S.S.; order 127889)

N.S.S. = Not Sold Separate



SERVICE KITS

Gasket Set 6804-001			
Item #	Qty.	Part Number	Description
	3	111015-007	bearing adj. shim, .007 fiber
	1	111015-010	bearing adj. shim, .010 fiber
	1	111015-015	bearing adj. shim, .015 fiber
	4	2134	valve gasket
	1	3100	gasket, oil sump
	2	6556	bearing adj. shim, .007 fiber
	1	6556A	bearing adj. shim, .010 fiber
	1	6556	bearing adj. shim, .007 fiber
	1	6557	gasket, cylinder to crankcase
	1	6558	gasket, handhole plate
	1	6551	bearing cup
	4	6562	gasket, valve cover

Head Kit K210A			
Item #	Qty.	Part Number	Description
	4	1194	valve disc
	2	6542	valve spring
	2	8123	discharge valve spring
	4	2134	valve gasket
	4	6562	gasket, valve cover
	2	8200	unloader diaphragm
	1	6561	gasket, cylinder to head
	1	7296	air filter felt
	1	112845-06	air filter element

Yearly Maintenance Kit 110516-210			
Item #	Qty.	Part Number	Description
	1	110162	oil pressure gauge
	2	6283	hydraulic unloader filter
	2	6540X	suction valve assembly
	1	6804-001	gasket set
	2	8133	discharge valve assembly
	2	8200	unloader diaphragm

Minor Overhaul Kit K210B <i>(does <u>not</u> include main bearings for crankshaft)</i>			
Item #	Qty.	Part Number	Description
	2	6801	ring set (standard)
	4	1194	valve disc
	1	6804-001	gasket set
	1	111016	shaft seal
	2	8200	unloader diaphragm
	2	6542	valve spring
	2	8123	discharge valve spring

Major Overhaul Kit 110823-210 <i>(includes main bearings for crankshaft)</i>			
Item #	Qty.	Part Number	Description
	2	110190-003	piston pin
	4	1194	valve disc
	2	6542	valve spring
	1	6551	bearing cup
	1	6552	bearing cone
	1	6553	bearing cup
	1	6554	bearing cone
	2	6801	ring set (standard)

Recommended Spare Parts			
Item #	Qty.	Part Number	Description
	2	6540X	suction valve assembly
	2	8133	discharge valve assembly
	1	110162	oil pressure gauge
	1	2022119902	oil pump repair kit
	1	6804-001	gasket set
	2	8200	unloader diaphragm
	1	112845-06	air filter element
	1	2023903290	control valve inlet filter

Oil Pump Repair Kit 2022119902			
Item #	Qty.	Part Number	Description
	1	22749-152	"o"ring
	1	22749-012	"o"ring
	1	22749-110	"o"ring
	1	110766	oil pump gerotor

TYPICAL UNIT REPAIR PARTS LIST

The parts listed here are for standard 210 units and may or may not be applicable to custom built units. Check with your local authorized Quincy distributor for parts that can be used for custom built units. Make sure the components you order are rated within the safe operating limits of your system. If you are doubtful about which components to order, contact your local authorized Quincy distributor.

(210 simplex - horizontal & vertical tank - electric motor)

Qty	Part Number	Part Number	Part Number	Description
	30 gal. horizontal	60 gal. horizontal	30 gal. vertical	
1	113264-200	113891-200	113265-200	tank
1	2713	2713	2713	tank drain valve
1	111136-050	111136-075	111136-050	ball valve
1	110514-200	110514-200	110514-200	pressure gauge
1	110512-007	110512-007	110512-007	pressure switch (80-100 PSI)
1	110513-165	110513-165	110513-165	pressure relief valve (in tank)
2.5 ft.	110515-050	110515-050	110515-050	! discharge tube (1/2" copper tube to be formed by customer)
2	110948-050	110948-050	110948-050	ferrule/sleeve
	1 h.p.	1-1/2 h.p.		
1	<i>110357B051</i>	<i>110258B053</i>		drive belt, B section
1	<i>3838-78</i>	<i>3844-78</i>		motor pulley, B section
1	<i>111023K001</i>	<i>111023K001</i>		belt guard assembly
	115/230v, 1Ø	200v, 3Ø	230/460v, 3Ø	
1	<i>4000</i>	<i>8095</i>	<i>124517-003</i>	1 h.p. motor (ODP)
1	<i>4001</i>	<i>8096</i>	<i>124517-042</i>	1-1/2 h.p. motor (ODP)

(210 duplex - horizontal tank - electric motor)

Qty	Part Number	Part Number	Part Number	Description
	60 gal. horizontal			
1	114009-200			tank
1	2713			tank drain valve
1	111136-050			ball valve
1	110514-200			pressure gauge
1	110512-007			pressure switch (80-100 PSI)
1	110512-006			pressure switch (70-90 PSI)
1	110513-165			pressure relief valve
5 ft.	110515-050			! discharge tube (1/2" copper tube to be formed by customer)
4	110948-050			ferrule/sleeve
	1 h.p.	1-1/2 h.p.		
2	<i>110357B051</i>	<i>110258B053</i>		drive belt, B section
2	<i>3838-78</i>	<i>3844-78</i>		motor pulley, B section
2	<i>111023K001</i>	<i>111023K001</i>		belt guard assembly
	115/230v, 1Ø	200v, 3Ø	230/460v, 3Ø	
2	<i>4000</i>	<i>8095</i>	<i>124517-003</i>	1 h.p. motor (ODP)
2	<i>4001</i>	<i>8096</i>	<i>124517-042</i>	1-1/2 h.p. motor (ODP)

Use top plate 113275 & pressure switch 2298S3810 for base mounted units.

Part numbers shown in italics apply to tank mounted units and base mounted units.

! Pre-formed discharge tubes are available. Contact factory with model & tank size information.

QUINCY COMPRESSOR STANDARD TERMS AND CONDITIONS

LEGAL EFFECT: Except as expressly otherwise agreed to in writing by an authorized representative of Seller, the following terms and conditions shall apply to and form a part of this order and any additional and/or different terms of Buyer's purchase order or other form of acceptance are rejected in advance and shall not become a part of this order.

The rights of Buyer hereunder shall be neither assignable nor transferable except with the written consent of Seller.

This order may not be canceled or altered except with the written consent of Seller and upon terms which will indemnify Seller against all loss occasioned thereby. All additional costs incurred by Seller due to changes in design or specifications, modification of this order or revision of product must be paid for by Buyer.

In addition to the rights and remedies conferred upon Seller by this order, Seller shall have all rights and remedies conferred at law and in equity and shall not be required to proceed with the performance of this order if Buyer is in default in the performance of such order or of any other contract or order with seller.

TERMS OF PAYMENT: Unless otherwise specified in the order acknowledgment, the terms of payment shall be 1% 15, net forty-five (45) days after shipment. These terms shall apply to partial as well as complete shipments. If any proceeding be initiated by or against Buyer under any bankruptcy or insolvency law, or in the judgment of Seller the financial condition of Buyer, at the time the equipment is ready for shipment, does not justify the terms of payment specified, Seller reserves the right to require full payment in cash prior to making shipment. If such payment is not received within fifteen (15) days after notification of readiness for shipment, Seller may cancel the order as to any unshipped item and require payment of its reasonable cancellation charges.

If Buyer delays shipment, payments based on date of shipment shall become due as of the date when ready for shipment. If Buyer delays completion of manufacture, Seller may elect to require payment according to percentage of completion. Equipment held for Buyer shall be at Buyer's risk and storage charges may be applied at the discretion of Seller.

Accounts past due shall bear interest at the highest rate lawful to contract for but if there is no limit set by law, such interest shall be eighteen percent (18%). Buyer shall pay all cost and expenses, including reasonable attorney's fees, incurred in collecting the same, and no claim, except claims within Seller's warranty of material or workmanship, as stated below, will be recognized unless delivered in writing to Seller within thirty (30) days after date of shipment.

TAXES: All prices exclude present and future sales, use, occupation, license, excise, and other taxes in respect of manufacture, sales or delivery, all of which shall be paid by Buyer unless included in the purchase price at the proper rate or a proper exemption certificate is furnished.

ACCEPTANCE: All offers to purchase, quotations and contracts of sales are subject to final acceptance by an authorized representative at Seller's plant.

DELIVERY: Except as otherwise specified in this quotation, delivery will be F. O. B. point of shipment. In the absence of exact shipping instruction, Seller will use its discretion regarding best means of insured shipment. No liability will be accepted by Seller for so doing. All transportation charges are at Buyer's expense. Time of delivery is an estimate only and is based upon the receipt of all information and necessary approvals. The shipping schedule shall not be construed to limit seller in making commitments for materials or in fabricating articles under this order in accordance with Seller's normal and reasonable production schedules.

Seller shall in no event be liable for delays caused by fires, acts of God, strikes, labor difficulties, acts of governmental or military authorities, delays in transportation or procuring materials, or causes of any kind beyond Seller's control. No provision for liquidated damages for any cause shall apply under this order. Buyer shall accept delivery within thirty (30) days after receipt of notification of readiness for shipment. Claims for shortages will be deemed to have been waived if not made in writing with ten (10) days after the receipt of the material in respect of which any such shortage is claimed. Seller is not responsible for loss or damage in transit after having received "In Good Order" receipt from the carrier. All claims for loss or damage in transit should be made to the carrier.

TITLE & LIEN RIGHTS: The equipment shall remain personal property, regardless of how affixed to any realty or structure. Until the price (including any notes given therefore) of the equipment has been fully paid in cash, Seller shall, in the event of Buyer's default, have the right to repossess such equipment.

PATENT INFRINGEMENT: If properly notified and given an opportunity to do so with friendly assistance, Seller will defend Buyer and the ultimate user of the equipment from any actual or alleged infringement of any published United States patent by the equipment or any part thereof furnished pursuant hereto (other than parts of special design, construction, or manufacture specified by and originating with Buyer), and will pay all damages and costs awarded by competent court in any suit thus defended or of which it may have had notice and opportunity to defend as aforesaid.

STANDARD WARRANTY: Seller warrants that products of its own manufacture will be free from defects in workmanship and materials under normal use and service for the period specified in the product instruction manual. Warranty for service parts will be Ninety (90) days from date of factory shipment. Electric Motors, gasoline and diesel engines, electrical apparatus and all other accessories, components and parts not manufactured by Seller are warranted only to the extent of the original manufacturer's warranty.

Notice of the alleged defect must be given to the Seller, in writing with all identifying details including serial number, type of equipment and date of purchase within thirty (30) days of the discovery of the same during the warranty period.

Seller's sole obligation on this warranty shall be, at its option, to repair or replace or refund the purchase price of any product or part thereof which proves to be defective. If requested by Seller, such product or part thereof must be promptly returned to seller, freight prepaid, for inspection.

Seller warrants repaired or replaced parts of its own manufacture against defects in materials and workmanship under normal use and service for ninety (90) days or for the remainder of the warranty on the product being repaired.

This warranty shall not apply and Seller shall not be responsible or liable for:

- (a) Consequential, collateral or special losses or damages;
- (b) Equipment conditions caused by fair wear and tear, abnormal conditions of use, accident, neglect or misuse of equipment, improper storage or damage resulting during shipping;
- (c) Deviation from operating instructions, specifications or other special terms of sale;
- (d) Labor charges, loss or damage resulting from improper operation, maintenance or repairs made by person(s) other than Seller or Seller's authorized service station.

In no event shall Seller be liable for any claims whether arising from breach of contract or warranty or claims of negligence or negligent manufacture in excess of the purchase price.

THIS WARRANTY IS THE SOLE WARRANTY OF SELLERS AND ANY OTHER WARRANTIES, WHETHER EXPRESS OR IMPLIED IN LAW OR IMPLIED IN FACT, INCLUDING ANY WARRANTIES OF MERCHANTABILITY AND FITNESS FOR PARTICULAR USE ARE HEREBY SPECIFICALLY EXCLUDED.

LIABILITY LIMITATIONS: Under no circumstances shall the Seller have any liability for liquidated damages or for collateral, consequential or special damages or for loss of profits, or for actual losses or for loss of production or progress of construction, whether resulting from delays in delivery or performance, breach of warranty, negligent manufacture or otherwise.

ENVIRONMENTAL AND OSHA REQUIREMENTS: At the time of shipment of the equipment from the factory, Quincy Compressor / Ortman Fluid Power will comply with the various Federal, State and local laws and regulations concerning occupational health and safety and pollution. However, in the installation and operation of the equipment and other matters over which the seller has no control, the Seller assumes no responsibility for compliance with those laws and regulations, whether by the way of indemnity, warranty or otherwise.

June 30, 2003



Reciprocating / Systems: 217.222.7700
E-mail: info@quincycompressor.com
Website: quincycompressor.com

